

**Narooma Coastal Area - Map 13**

**Navigation Aids**

- Lighthouse
- Lighted buoy
- Lighted buoy

**General Information**

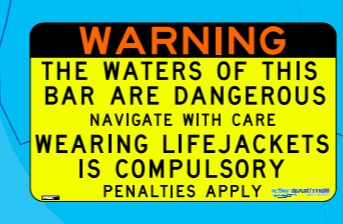
- Point of interest
- Coastline station
- Road & Maritime local office
- Alpine Rescue NSW Base

**NOTES**

Depth contours are in metres. Heights shown in brackets are in metres above mean high water. Chart datum is the Geoid Height Datum of Australia - 1994, which is approximately equivalent to WGS-84.

**DISCLAIMER!** This map is not intended to be used for navigational purposes and Roads and Maritime Services takes no responsibility for the accuracy of the content herein. Refer to Marine Safety notes. Map Printed: December 2011. Copyright Roads and Maritime Services

The local office of Roads & Maritime Services is located at: Cnr Burnbank & Graham Sts, Narooma NSW 2546. Tel: (02) 4476-2844



Note: It is compulsory to carry certain safety equipment including a lifejacket Type 1 for all on board, whilst navigating in the open sea. It is also compulsory that lifejackets be worn whilst crossing most entrance bars shown on this map. Further information on what you should carry can be found in the Roads and Maritime Services Safe Boating Handbook available from all RMS offices or by visiting [www.rms.nsw.gov.au](http://www.rms.nsw.gov.au)

The Marine Safety (General) Regulation 2009 requires vessels on open water (i.e. out from the coast) to have an appropriate map or chart on board. This map is deemed to be an appropriate map for recreational vessels undertaking voyages less than 3 nautical miles off the coast and within a radius of 15 nautical miles from the point of departure from the coast. Vessels undertaking longer voyages than that stated above MUST carry an appropriate chart (i.e. an Admiralty or Australian Hydrographic Service chart) showing the area proposed for the voyage or excursion. It is the vessel masters responsibility to ensure that they are in possession of the latest edition of this boating map or chart.



**YOU'RE THE SKIPPER YOU'RE RESPONSIBLE!**



Note: Webcams are being trialled at various locations along the NSW coast and full information and locations can be found at our website [www.rms.nsw.gov.au](http://www.rms.nsw.gov.au)

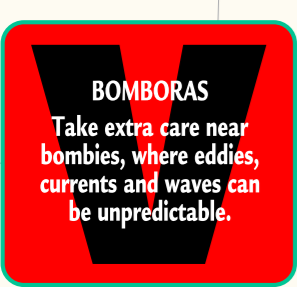
**USEFUL DISTANCE INFORMATION**

Narooma - Batemans Bay 20nm.  
Narooma - Bermagui 15nm.  
Bermagui - Twofold Bay 40nm.

F.A.D. Note: Fish Aggregation Device generally in position during summer months. Phone Fisheries on (02)9527-8411 or visit [www.dpi.nsw.gov.au/fisheries](http://www.dpi.nsw.gov.au/fisheries) for further information on how they work. DO NOT TIE UP TO THE DEVICE.

**IN CASE OF AN EMERGENCY**  
Call the nearest Marine Rescue NSW VMR Base on:-  
27 MHz Channels 88 & 86,  
VHF Channels 16, 67 & 73 or  
HF Channels 2182 & 2524 KHz.  
Remember to Log on and Log off.  
It serves as a useful Radio Check.  
Approximate locations are indicated thus...

**BOATING ENQUIRIES**  
Infoline: 13 12 56  
[www.maritime.nsw.gov.au](http://www.maritime.nsw.gov.au)



Cover picture: Cartoscope [www.info2go.com.au](http://www.info2go.com.au)

