

CAUTION: Four knot speed limits exist in various locations along the Myall River. The whole section from Tea Gardens to Tambo is a NO WASH ZONE, for all vessels at minimum hull speed.

Note: Bank erosion is a serious problem in the Myall River. Idle speed zones are being introduced at various locations along these waterways. All vessels MUST MAINTAIN IDLE SPEED within those zones.

All Vessels greater than 7 metres MUST MAINTAIN IDLE SPEED regardless throughout the entire Myall River area. Passage time is 2.5 hours - Tea Gardens to Tambo.

Note: General information such as caravan parks, hotels, motels, picnic grounds and public toilets etc. are indicated as a guide only. Not all can be shown in some areas.



WARNING: OVERHEAD AND SUBMARINE CABLES AND PIPES CROSS THESE WATERWAYS AT VARIOUS LOCATIONS AND ARE USUALLY INDICATED BY WARNING NOTICES ON THE SHORE. CAUTION SHOULD BE EXERCISED AT ALL TIMES WHILE NAVIGATING IN THE VICINITY OF THESE CROSSINGS.

CAUTION: Extensive oyster leases exist in various sections of the waterways depicted on this map. Some may not be shown and others may be collapsed or removed.

Note: Lit nav aids exhibit standard flash patterns, unless otherwise indicated. Some nav aids shown hereon have a 3 digit identifying number, please use this number to report faulty nav aids or your position in an emergency.

Note: NSW Maritime has a local office open for limited hours at Tea Gardens phone (02) 4997-1836.

Caution: Kayakers use this waterway. Be careful of your wash.

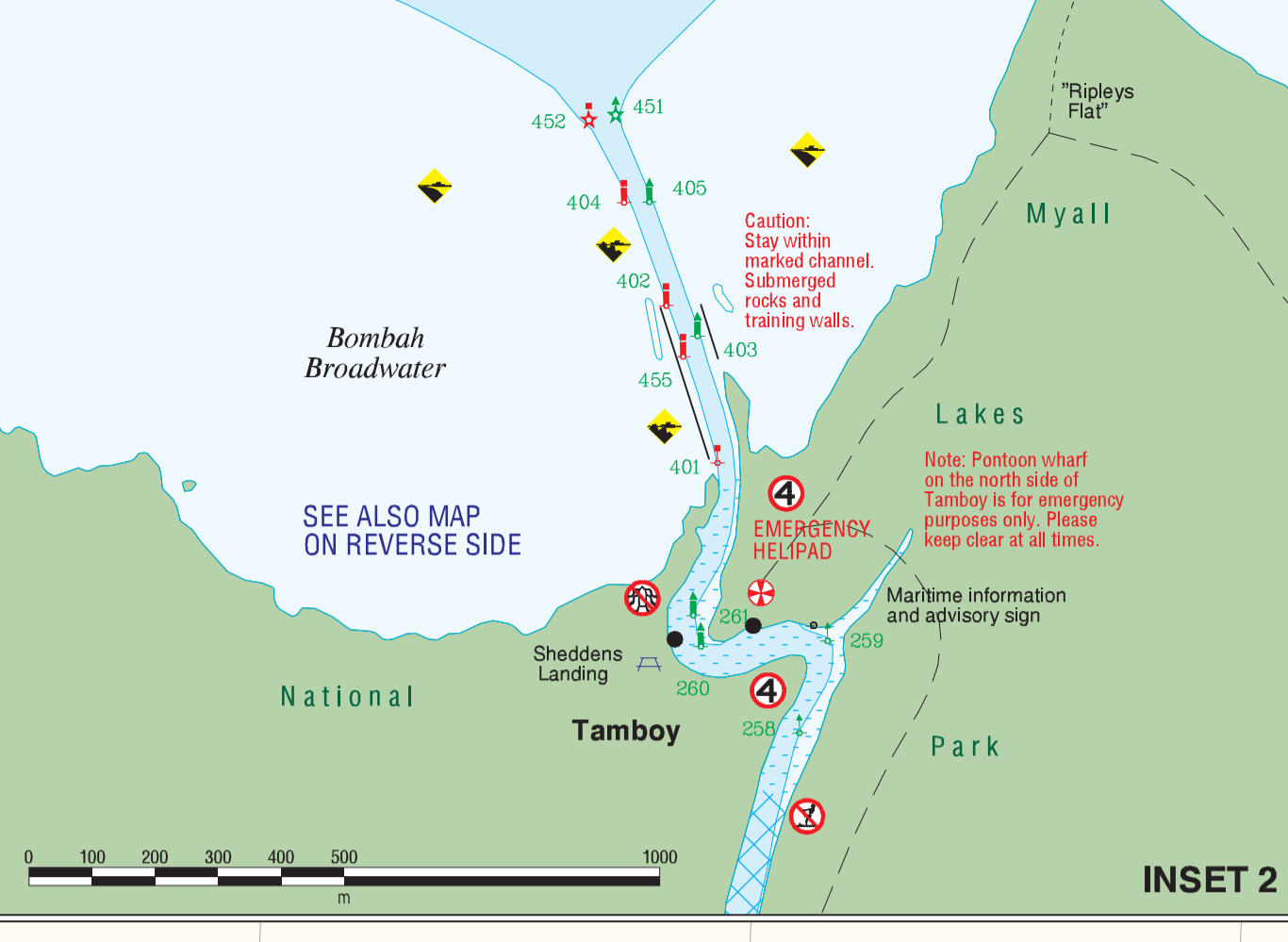
WARNING: OVERHEAD AND SUBMARINE CABLES AND PIPES CROSS THESE WATERWAYS AT VARIOUS LOCATIONS AND ARE USUALLY INDICATED BY WARNING NOTICES ON THE SHORE. CAUTION SHOULD BE EXERCISED AT ALL TIMES WHILE NAVIGATING IN THE VICINITY OF THESE CROSSINGS.

CAUTION: Extensive oyster leases exist in various sections of the waterways depicted on this map. Some may not be shown and others may be collapsed or removed.

Note: Lit nav aids exhibit standard flash patterns, unless otherwise indicated. Some nav aids shown hereon have a 3 digit identifying number, please use this number to report faulty nav aids or your position in an emergency.

Note: NSW Maritime has a local office open for limited hours at Tea Gardens phone (02) 4997-1836.

Caution: Kayakers use this waterway. Be careful of your wash.



WARNING: OVERHEAD AND SUBMARINE CABLES AND PIPES CROSS THESE WATERWAYS AT VARIOUS LOCATIONS AND ARE USUALLY INDICATED BY WARNING NOTICES ON THE SHORE. CAUTION SHOULD BE EXERCISED AT ALL TIMES WHILE NAVIGATING IN THE VICINITY OF THESE CROSSINGS.

Local Boating Service
Officers Mobile Numbers
0427-241252
0428-264316

NOTE: Disposal of toilet waste into the waterway is prohibited on the Myall Lakes System. Currently a waste disposal vessel, the Independence (marine radio frequency 27.88MHz, or phone 0417-621122) cruises the System on weekends and holidays. All waterway users are requested to utilise the vessel for waste disposal.

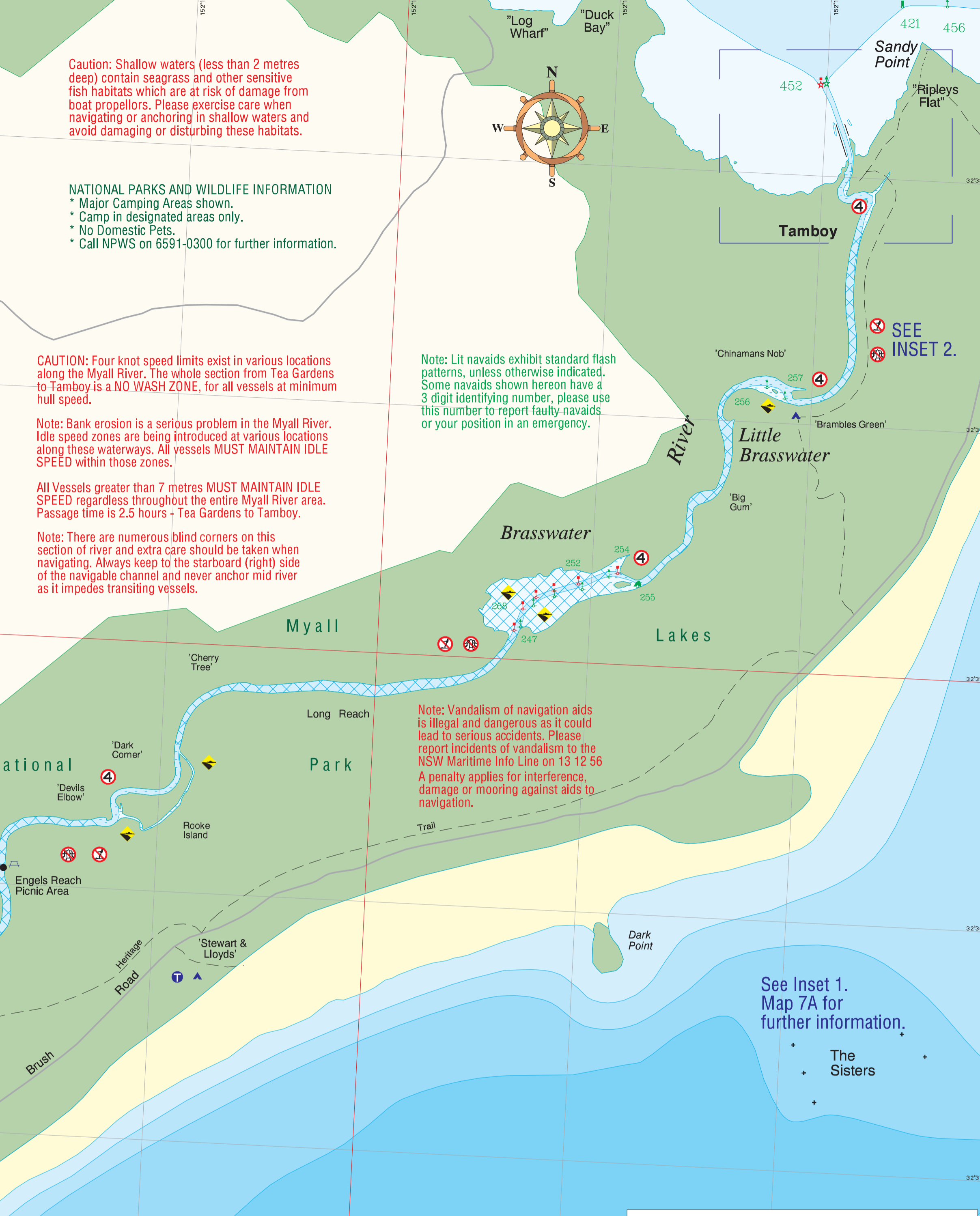
Self serve public vessel pumpout facilities are available free of charge at Myall Shores public wharf and the NSW Maritime Jetty at Tea Gardens.

Marine Engine breakdown assistance (24 hours) is available. Telephone (0418)499-750 for information.

Note: Grid Datum is Geocentric Datum of Australia - 1994, which is approximately equivalent to WGS 84.

NOTE: Strong tidal flows occur in the Myall River between Tambo and Corrie Island.

Caution: Low overhead Power cables 14.8 metres above mean high water.



Caution: Shallow waters (less than 2 metres deep) contain seagrass and other sensitive fish habitats which are at risk of damage from boat propellers. Please exercise care when navigating or anchoring in shallow waters and avoid damaging or disturbing these habitats.

NATIONAL PARKS AND WILDLIFE INFORMATION
* Major Camping Areas shown.
* Camp in designated areas only.
* No Domestic Pets.
* Call NPWS on 6591-0300 for further information.

CAUTION: Four knot speed limits exist in various locations along the Myall River. The whole section from Tea Gardens to Tambo is a NO WASH ZONE, for all vessels at minimum hull speed.

Note: Bank erosion is a serious problem in the Myall River. Idle speed zones are being introduced at various locations along these waterways. All vessels MUST MAINTAIN IDLE SPEED within those zones.

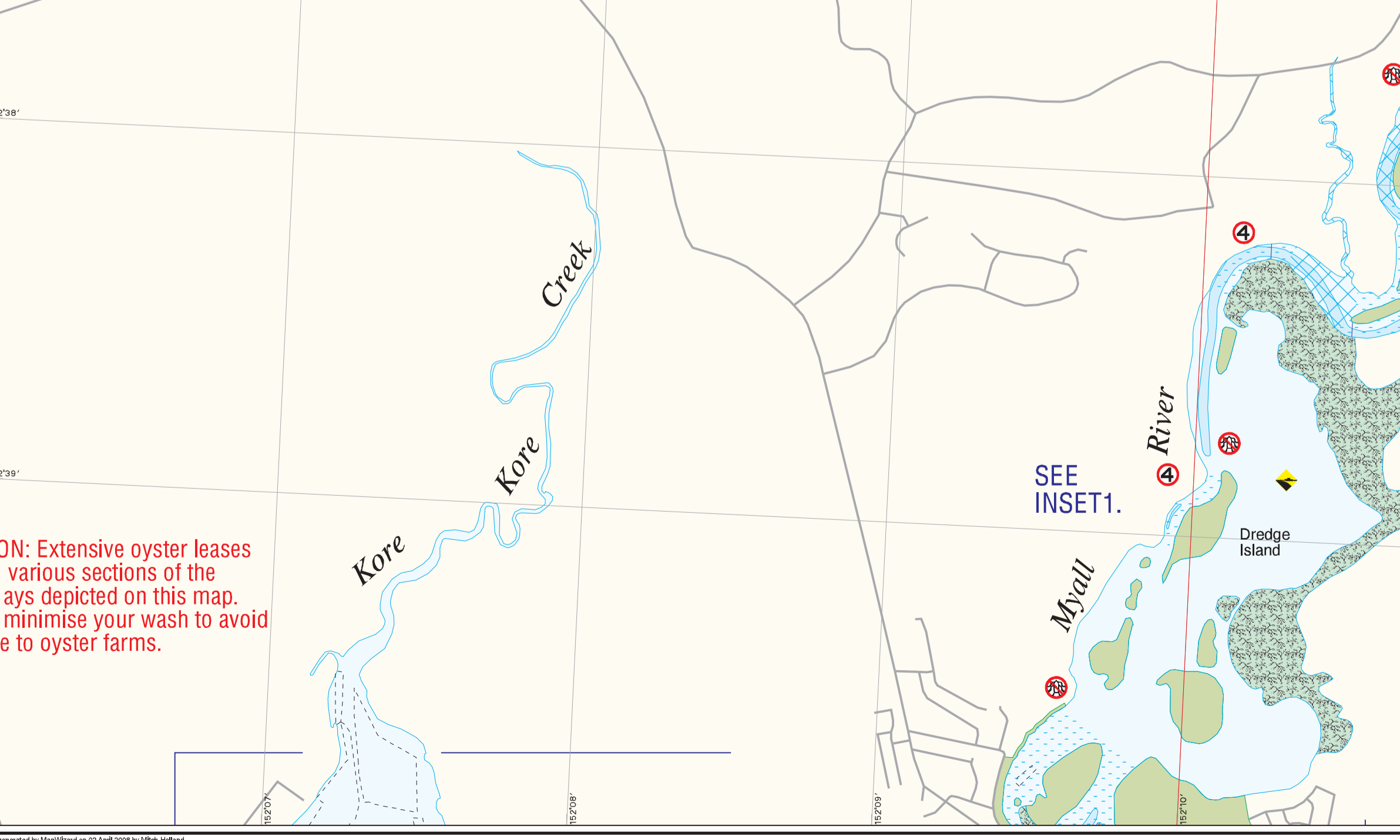
All Vessels greater than 7 metres MUST MAINTAIN IDLE SPEED regardless throughout the entire Myall River area. Passage time is 2.5 hours - Tea Gardens to Tambo.

Note: There are numerous blind corners on this section of river and extra care should be taken when navigating. Always keep to the starboard (right) side of the navigable channel and never anchor mid river as it impedes transiting vessels.

Note: Lit nav aids exhibit standard flash patterns, unless otherwise indicated. Some nav aids shown hereon have a 3 digit identifying number, please use this number to report faulty nav aids or your position in an emergency.

Note: Vandalism of navigation aids is illegal and dangerous as it could lead to serious accidents. Please report incidents of vandalism to the NSW Maritime Info Line on 13 12 56. A penalty applies for interference, damage or mooring against aids to navigation.

See Inset 1. Map 7A for further information.



ON: Extensive oyster leases various sections of the ays depicted on this map. minimise your wash to avoid e to oyster farms.



NOTE: PORT STEPHENS - GREAT LAKES MARINE PARK

All waters shown on this map form part of the Port Stephens - Great Lakes Marine Park (PSGL). External boundaries and Sanctuary Zones are shown by BLUE lines. Fishing restrictions apply. Please phone the Marine Parks Authority on (02) 4916-3970 or visit the Marine Parks Authority web site at www.mpa.nsw.gov.au for further information.

MAP OF Lower Myall River Area

Scale: 0 100 200 300 400 500 1000 m

Line symbols

- Overhead Cable Crossing
- Structure
- Obstacle
- Recommended navigation path

Restricted Waters

- 4 Knot Zone
- 8 Knot Zone
- No Staying or Anchoring
- No Wash Zone

Navigation Aids

- Standard Daymark
- Standard Nightmark
- Standard Daymark with Topmark
- Standard Nightmark with Topmark
- Standard Daymark with Topmark and Daylight Shape
- Standard Nightmark with Topmark and Daylight Shape
- Standard Daymark with Topmark and Daylight Shape
- Standard Nightmark with Topmark and Daylight Shape
- Standard Daymark with Topmark and Daylight Shape
- Standard Nightmark with Topmark and Daylight Shape

Restricted Activities and Cautions

- Dangerous Area
- Variable Winds
- No Wash Zone
- No Staying or Anchoring Zone
- Free Knot Speed Limit Area
- Warning Overhead Power Cables
- Caution Entrance Bar Crossing
- Caution Submerged Rocks
- Caution Submerged Cables

Boating Facilities

- Normal Launching Ramp
- Launch Ramp
- Fuel Available
- Public Wharf Jetty or Landing
- Mooring Buoys or Boat Ties
- Public Visual Aids

General Information

- Waterway or Non-Draining
- Public Telephone
- Public Toilet
- Known Medical Practitioner Area
- NWS Maritime Local Office
- Camping Ground
- Asphalt
- Hotel
- Post Office
- Phone Ground Junction
- Direction of Boatage
- Boat & Breakfast Accommodation
- Boat Hire
- Boat & Breakfast

NSW MARITIME

DISCLAIMER: This map is not intended to be used for navigational purposes and NSW Maritime takes no responsibility for the accuracy of the content herein.
Map Printed: April 2008. Copyright NSW Maritime.
The local office of NSW Maritime is situated at: 12 Taramee Road, Nelson Bay NSW, 2515. Telephone: 484 2133.