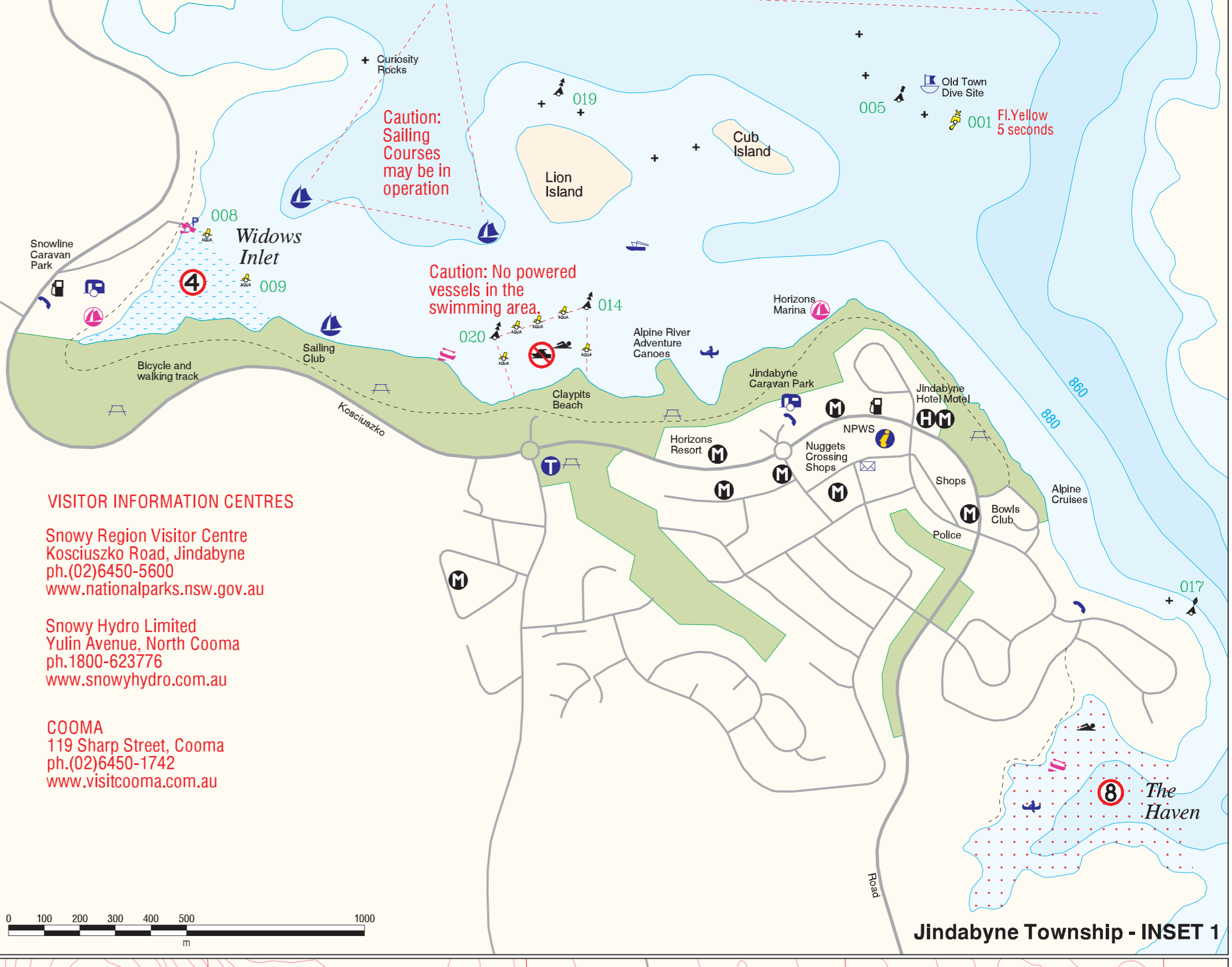


**WARNING: BEWARE OF SUBMERGED ROCKS, TREES AND SHALLOW AREAS, PARTICULARLY AT LOWER LEVELS.**

Sawpit Creek  
1 km.  
Smiggin Holes  
18 km.  
Mt. Kosciusko  
27 km.

**WARNING: BEWARE OF SUBMERGED ROCKS, TREES AND SHALLOW AREAS, PARTICULARLY AT LOWER LEVELS.**

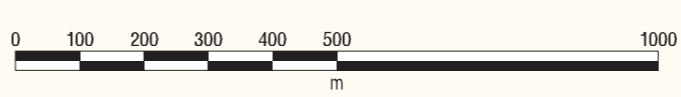


**VISITOR INFORMATION CENTRES**

**Snowy Region Visitor Centre**  
Kosciuszko Road, Jindabyne  
ph.(02)6450-5600  
www.nationalparks.nsw.gov.au

**Snowy Hydro Limited**  
Yulin Avenue, North Cooma  
ph.1800-623776  
www.snowyhydro.com.au

**COOMA**  
119 Sharp Street, Cooma  
ph.(02)6450-1742  
www.visitcooma.com.au



**Jindabyne Township - INSET 1**

Note: Most navigation aids shown on this map exhibit a three digit identifying number. Please use this number to report faulty nav aids or your position in an emergency.

Note: General information such as Caravan Parks, Hotels, Motels, Picnic Grounds and Public Toilets etc. are indicated as a guide only. Not all can be shown in some areas.

Note: Grid Datum is the Geocentric Datum of Australia - 1994, which is approximately equivalent to WGS-84.

**CAUTION: Boating on inland waters demands special care. Information on boating in these areas can be found in the NSW Maritime Boating Handbook available from our Service Centres or by contact options shown on the map cover.**

Berridale 13 km.  
Cooma 42 km.

Land contour interval 20 metres. All heights and depths shown on this map refer to Australian Height Datum, (AHD)

For detailed land based information please refer to Land & Property Information Topographic Maps: Jindabyne 8625-3S and Kalkite Mountain 8625-3N. Also refer to their Snowy - Kosciusko Tourist Map. www.lands.nsw.gov.au

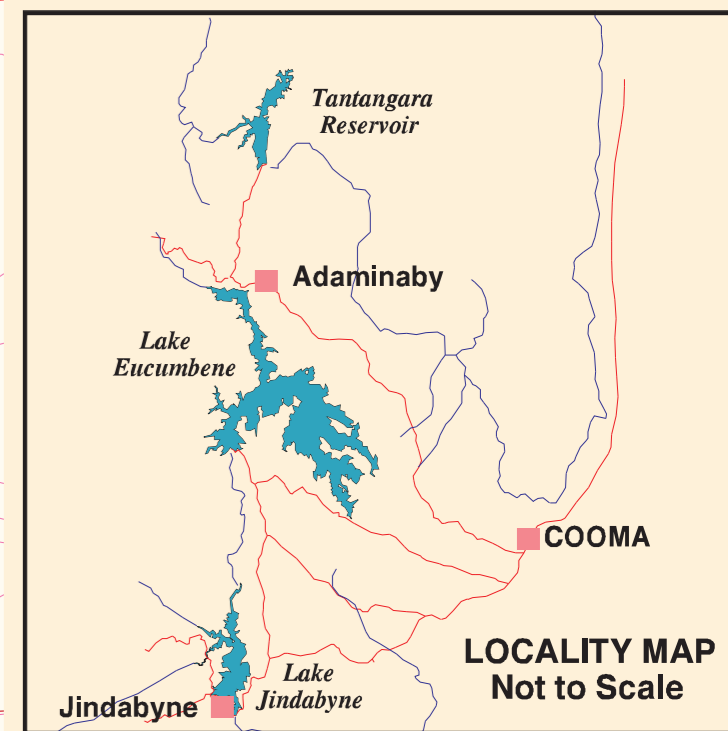
For detailed Fishing information refer to Australian Fishing Network Map Number 9. www.afn.com.au

Unless exempt, you are required to hold a NSW Recreational Fishing Licence to fish in these waters. Anglers are permitted two attended lines.  
For bag limits, size limits and seasonal closure information, contact the local Department of Primary Industries Fisheries Office or visit www.fisheries.nsw.gov.au

**LAKE JINDABYNE STORAGE LEVELS**  
Normal Full Supply Level - 911m AHD  
Minimum Operating Level - 895m AHD

Water depth contours have been compiled from original survey information provided by Snowy Mountains Authority and are indicative only. Further information on Jindabyne Dam, current water levels and the Snowy Scheme generally can be found at www.snowyhydro.com.au

Note: Some foreshore lands around Lake Jindabyne are privately owned and permission is required to step ashore.



**LOCALITY MAP**  
Not to Scale

MAP OF  
**Lake Jindabyne Area**

0 100 200 300 400 500 1000  
m

**Restricted Waters**

- 4 Knots
- 8 Knots
- No Sailing or Speeding

**Navigation Aids**

- Port Buoy
- Starboard Buoy
- East Cardinal Buoy
- West Cardinal Buoy
- North Cardinal Buoy
- South Cardinal Buoy
- Light Buoy
- Light Buoy
- Light Buoy
- Light Buoy
- Light Buoy
- Light Buoy

**Restricted Activities and Cautions**

- High Surface Obstruction
- No or Power Boat
- 4 Knot Speed
- 8 Knot Speed
- Caution Shallow Water

**Boating Facilities**

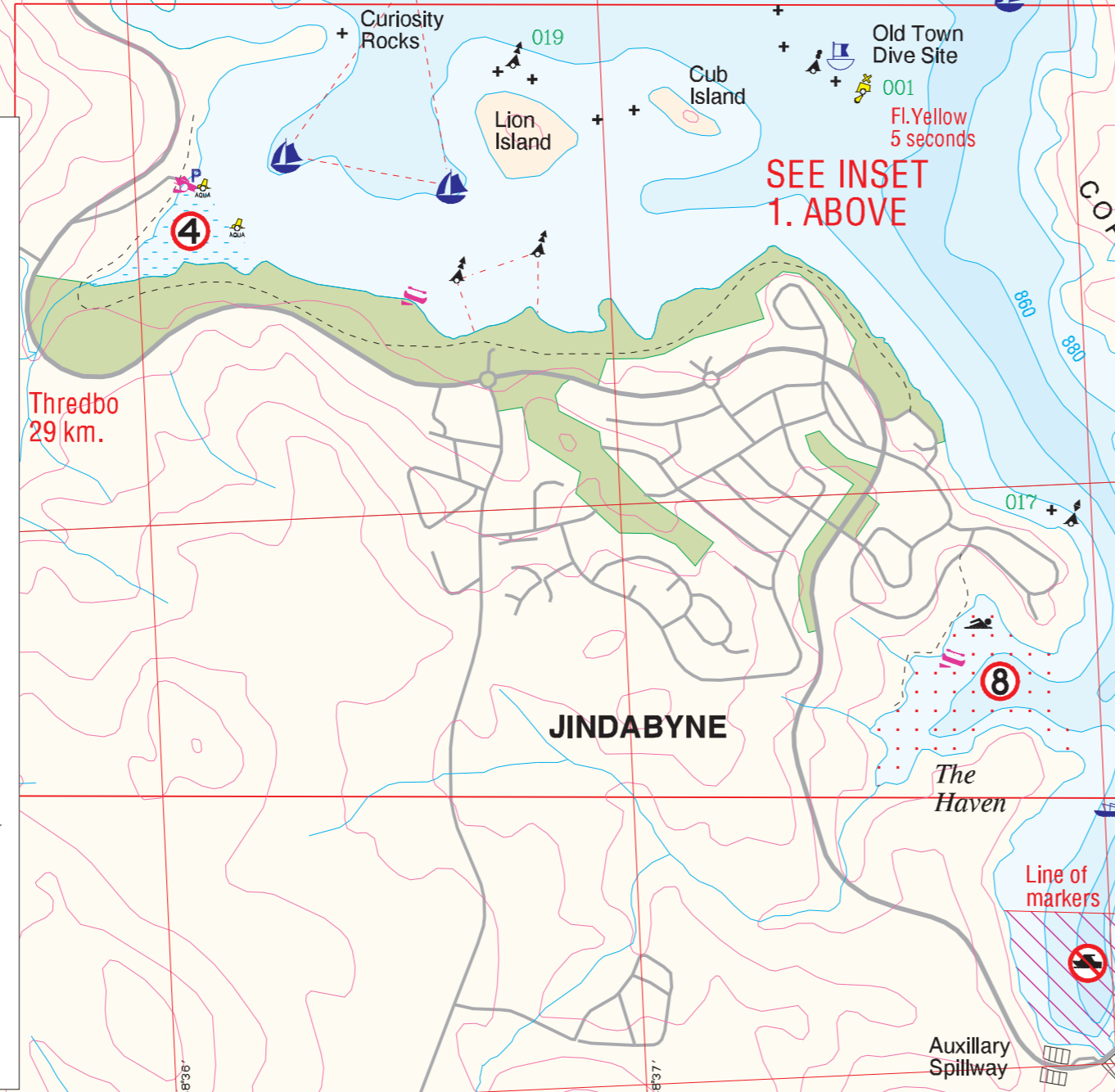
- Underlaid Soft Launching Ramp
- Formed Surface Launching Ramp
- Launching Ramp
- Fuel Available
- Boat Hire

**General Information**

- Public Information
- Public Toilet
- Caravan Park
- Hotel
- Picnic Ground
- Public Office
- Public Ground Facilities
- Sound Info Centre or Sign

**NSW MARITIME AUTHORITY**

**DISCLAIMER!** This map is not intended to be used for navigational purposes and NSW Maritime takes no responsibility for the accuracy of the content herein.  
Map Printed: March 2006. Copyright NSW Maritime Authority  
The local office of NSW Maritime is situated at: 1/11 Battle Street Queanbeyan NSW 2620. Telephone: 6297 4465.



**JINDABYNE DAM FACTS**  
Rockfill construction  
Completed 1987  
Height 71 metres  
Crest Length 335 metres  
Gross Capacity 689,900 m3