

**REVIEW OF  
PERSONAL WATER  
CRAFT (PWC)  
IN  
EUROBODALLA SHIRE**

**NSW | MARITIME**  




# 1 Background

In 2002 the Eurobodalla Shire Council established a Personal Watercraft (PWC) working party to look at the issue of PWC use and formulate a shire wide policy. This group comprised community, industry, boating groups, NSW Maritime and council representatives.

A number of community workshops were conducted by Eurobodalla Shire Council to examine the use of personal watercraft (PWC) within the shire. These workshops resulted in the Council requesting NSW Maritime to introduce a trial of restrictions on where and how PWC could be operated within the Eurobodalla district.

On 14 December 2004, the Minister approved the introduction of four personal watercrafts (PWC) restriction areas on a trial basis.

## 1.1 Trial PWC restricted areas

1. Durras area – South Durras exclusion zone and Durras Lake speed restricted area, allowing access to the boat ramp;
2. Broulee Bay – exclusion zone areas include Broulee Beach, Tomakin Beach, Tomakin Cove with PWC restricted to a narrow speed restricted channel, allowing access to the boat ramp at Mossy Point on the Tomaga River;
3. Turros Lake – an exclusion zone with PWC restricted to a narrow channel between the boat ramp at Turros Head and the open ocean with an 8-knot speed restriction; and
4. Batemans Bay – all powered vessels excluded from Cullendulla Creek

PWC users are permitted access to the facilities necessary to operate in the non-restricted areas. Provision was made for affected PWC operators to transit directly from launching ramps to areas outside the exclusion zone.

Maps of the trial PWC restricted areas are attached.

## 2 Purpose of this review

The purpose of this review is to determine whether any, some or all of the restrictions in the Eurobodalla Shire Council area should continue.

## 3 How will this be achieved?

NSW Maritime will consult with the Eurobodalla Community and relevant stakeholders to assess:

- a) The current impacts from the PWC restrictions on residents and the boating community.
- b) If any modifications or removal of restrictions is needed to the existing trial PWC restriction areas.
- c) What strategy is appropriate for implementing any changes to the existing trial areas.

## 4 How to make a submission

Submissions can be made:

- By email to [communications@maritime.nsw.gov.au](mailto:communications@maritime.nsw.gov.au) or
- In writing to:

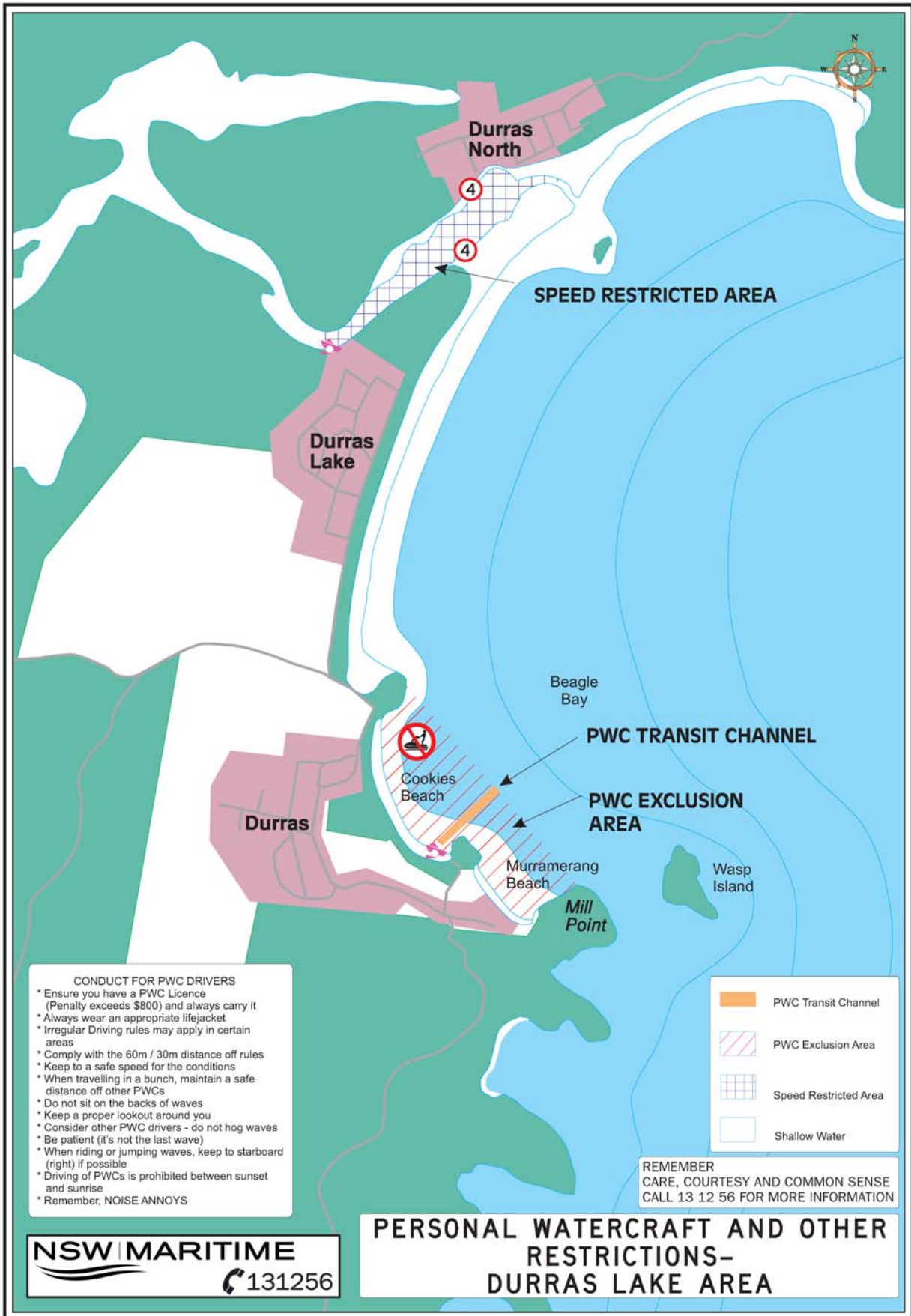
**NSW Maritime**

**Communications Branch**

**Locked Bay 5100**

**CAMPERDOWN NSW 1450**

The closing date for submissions is 5pm, 5 November 2010



# PERSONAL WATERCRAFT AND OTHER RESTRICTIONS-BATEMANS BAY AREA

REMEMBER  
CARE, COURTESY AND COMMON SENSE  
CALL 13 12 56 FOR MORE INFORMATION

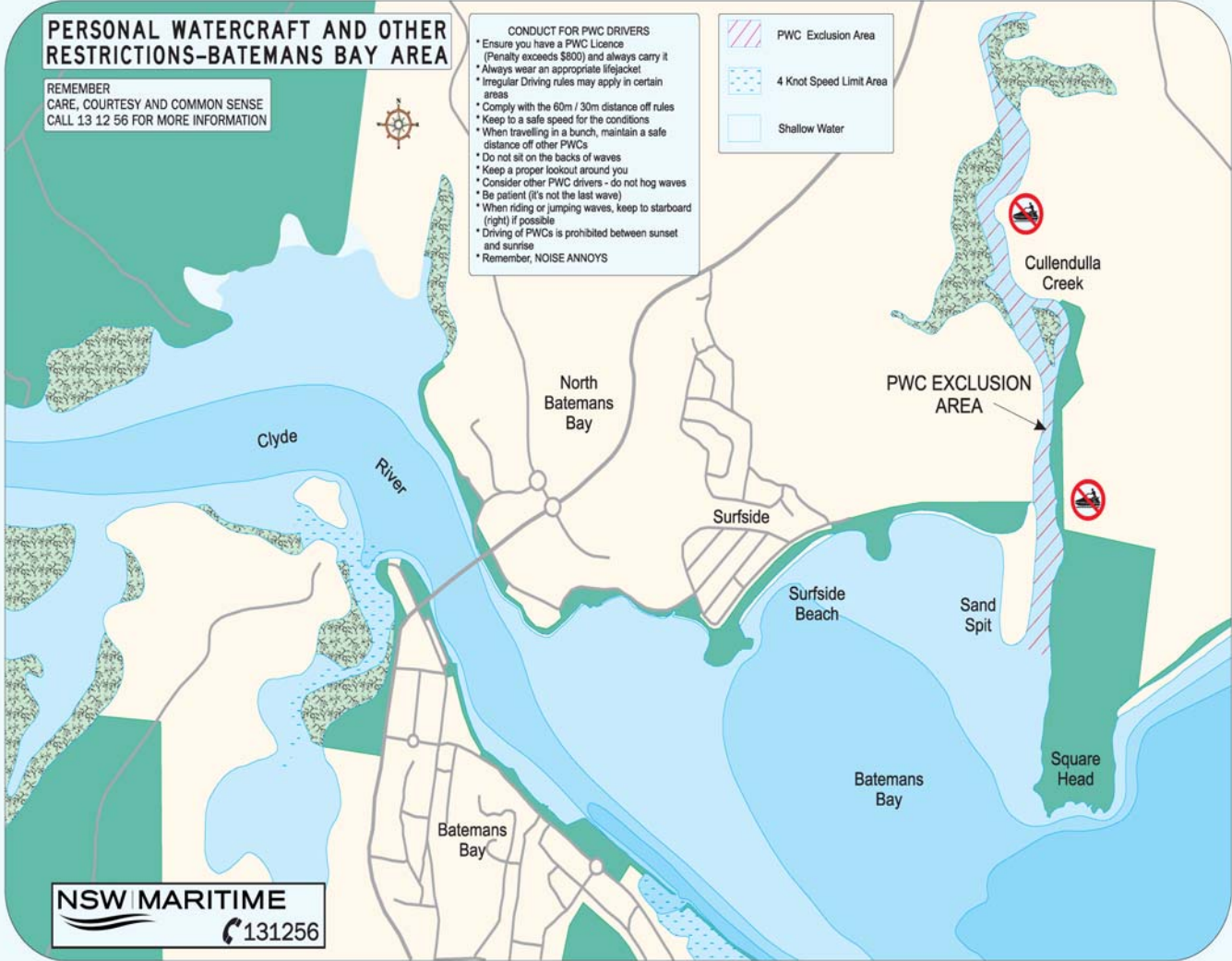


- CONDUCT FOR PWC DRIVERS**
- \* Ensure you have a PWC Licence (Penalty exceeds \$800) and always carry it
  - \* Always wear an appropriate lifejacket
  - \* Irregular Driving rules may apply in certain areas
  - \* Comply with the 60m / 30m distance off rules
  - \* Keep to a safe speed for the conditions
  - \* When travelling in a bunch, maintain a safe distance off other PWCs
  - \* Do not sit on the backs of waves
  - \* Keep a proper lookout around you
  - \* Consider other PWC drivers - do not hog waves
  - \* Be patient (it's not the last wave)
  - \* When riding or jumping waves, keep to starboard (right) if possible
  - \* Driving of PWCs is prohibited between sunset and sunrise
  - \* Remember, NOISE ANNOYS

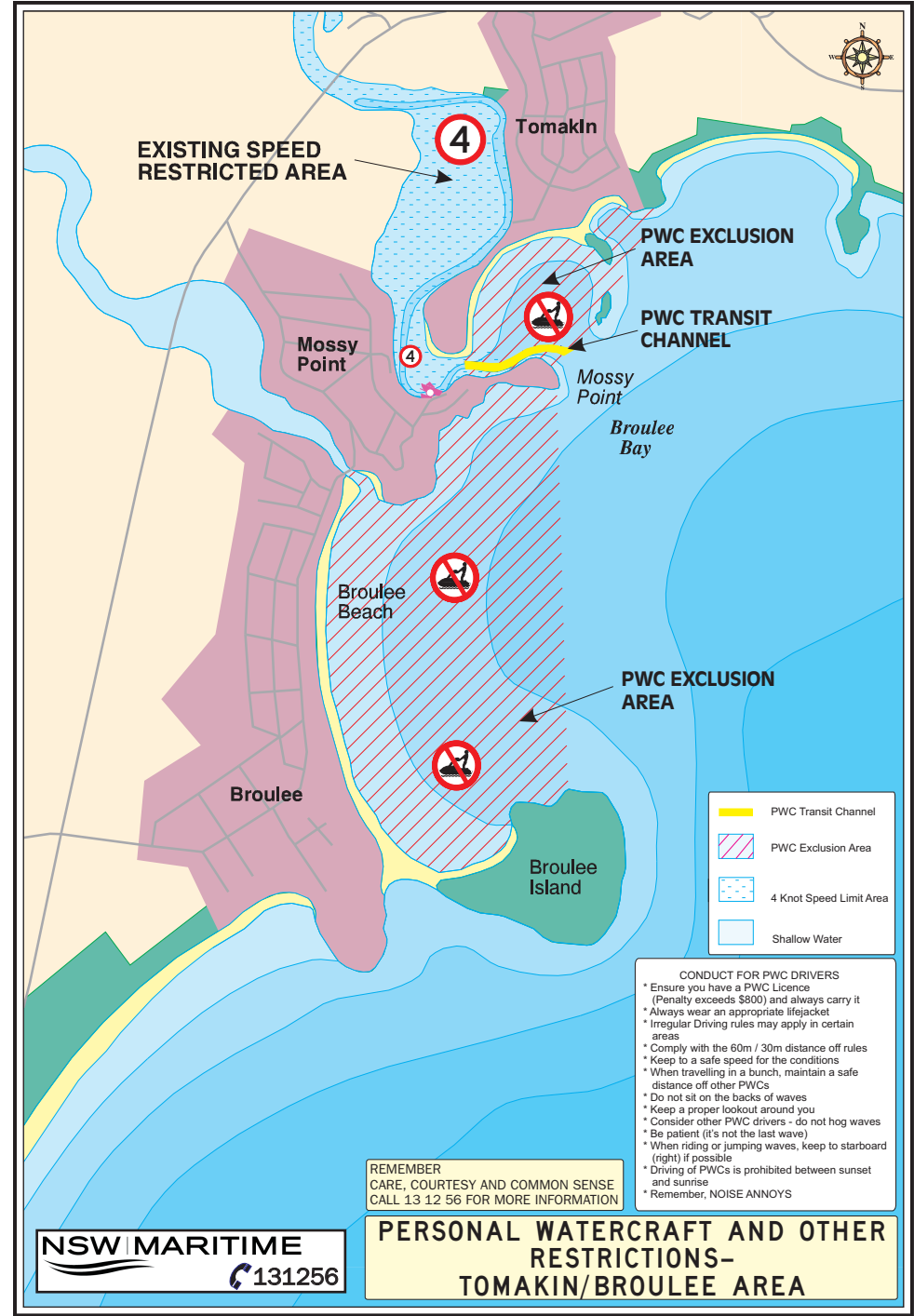
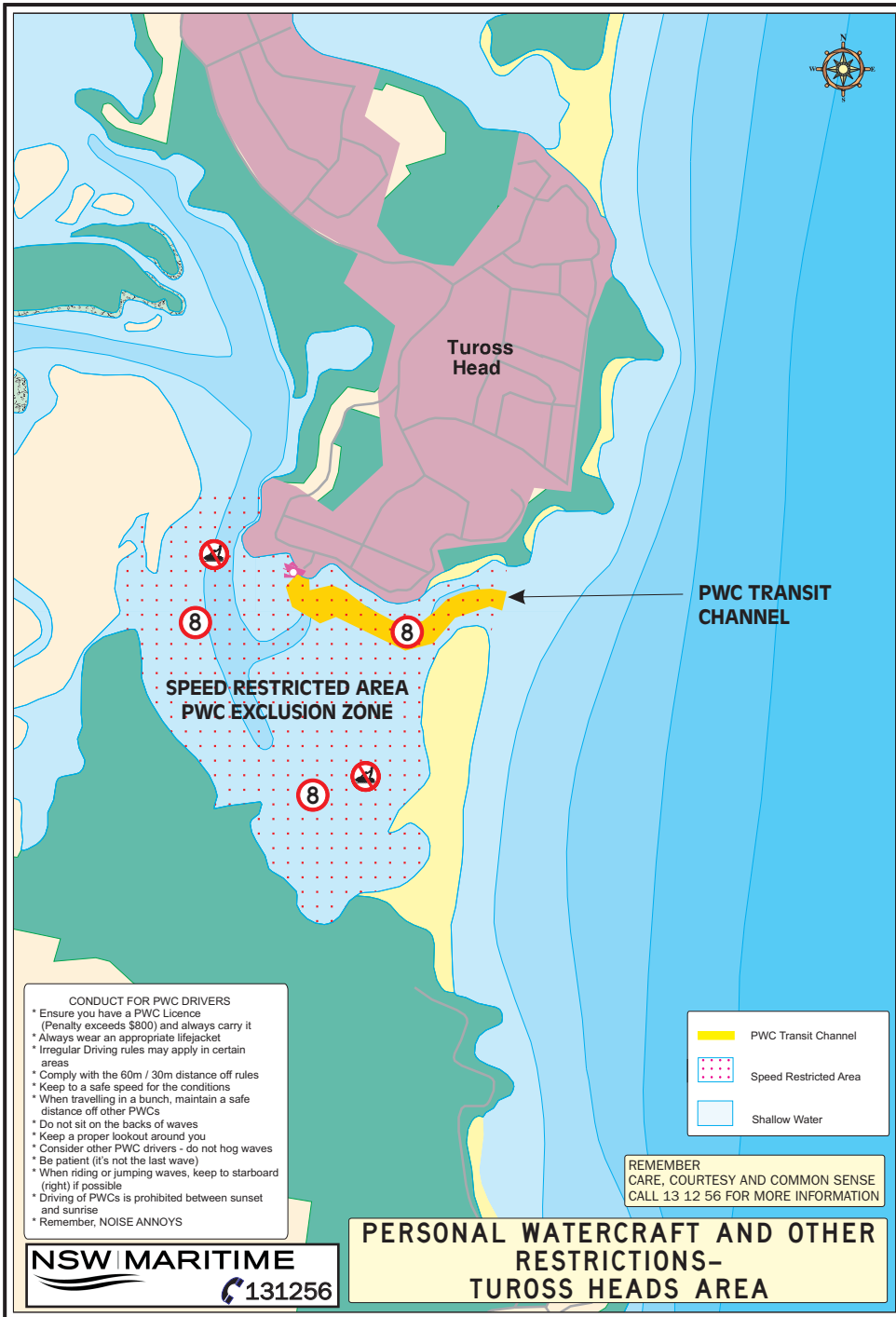
 PWC Exclusion Area

 4 Knot Speed Limit Area

 Shallow Water



**NSW MARITIME**  
131256





Published by NSW Maritime

Locked Bag 5100

Camperdown NSW 1450

[www.maritime.nsw.gov.au](http://www.maritime.nsw.gov.au)